



Installation & User Guide
SK01 EXTERNAL 2.5" DRIVE STORAGE KIT



www.crucial.com

For additional information on product, warranty or return information visit **www.crucial.com/support**

Pour obtenir de plus amples renseignements sur la garantie ou le retour de produit, veuillez visiter le site **www.crucial.com/support**

Zusätzliche Informationen zur Produktgarantie oder zum Zurücksenden finden Sie unter **www.crucial.com/support**

Gå til **www.crucial.com/support** for ytterligere informasjon om produktgaranti eller -retur

Per ulteriori informazioni sulla garanzia del prodotto o sulla restituzione, visitare il sito **www.crucial.com/support**

Para más información sobre la garantía del producto o el procedimiento de devolución, visite **www.crucial.com/support**

如需了解其他有关产品担保或退还的信息，请访问 **www.crucial.com/support**。

製品の保証や返品についての詳細は、**www.crucial.com/support** にアクセスしてください。

Table of Contents

Package contents	2
-------------------------------	----------

Minimum system requirements	2
--	----------

Installation steps

• To insert the SSD into the 2.5-inch external enclosure	3-4
• To use the 2.5-inch external enclosure as a standalone device.....	5
• To use the 2.5-inch external enclosure in the 3.5-inch desktop drive bay	5-7
• To use the 2.5-inch external enclosure in the 5.25-inch desktop drive bay	8-10

Removal steps

• To remove a 2.5-inch external enclosure from a 3.5-inch or 5.25-inch drive bay.....	11
• To remove the standalone 2.5-inch external enclosure from the USB port in Windows 2000 or above.....	12
• To remove the standalone 2.5-inch external enclosure from the USB port in a Mac	12

Partitioning and formatting steps

• To partition and format the storage drive in Windows 2000 or above	13-18
• To partition and format the SSD in Mac OS	19-22

FAQs	23
-------------------	-----------

Package contents

- 2.5-inch USB 2.0 external enclosure
- 3.5-inch hot-swappable SATA drive bay
- 5.25-inch bracket
- USB cable
- Internal SATA cable
- Internal power cable adapter
- Screw packets:
 - 7 large screws for mounting 3.5-inch drive bay and 5.25-inch bracket, plus 1 spare
 - 4 small screws for attaching the SSD to the PCB, plus 1 spare
- Protective carrying case
- User guide

NOTE: The Crucial SK01 storage kit does NOT contain an SSD; please purchase the SSD separately at Crucial.com. The SK01 storage kit is also compatible with standard 2.5-inch SATA mechanical hard drives.

Minimum system requirements

- Microsoft® Windows® 2000 or above
- Mac® OS 9.x or above
- Linux kernel 2.4.1.0 or above
- Computer with a USB 2.0 connection (for external/standalone use) and SATA interface (for internal installation)

Installation steps

The SK01 external 2.5-inch storage kit is designed to house an internal 2.5-inch SSD for use in three different ways:

- Connection as an external USB 2.0 device for desktops or notebooks
- Connection via a SATA 3Gb/s port by way of installation into a 3.5-inch desktop drive bay
- Connection via a SATA 3Gb/s port by way of installation into a 5.25-inch desktop drive bay

NOTES:

- No USB or SATA driver installation is required for Windows 2000 or above or for Mac OS 9.x or above. However, drivers may be required for other OSs; check with your software and system manufacturer.

To insert the SSD into the 2.5-inch external enclosure

Regardless of whether you choose internal installation or standalone use, you must first insert your SSD into the 2.5-inch external enclosure provided in this kit.

1. Unscrew the back cover of the 2.5-inch external enclosure (Pic A) and pull out the printed circuit board (PCB) (Pic B).



A

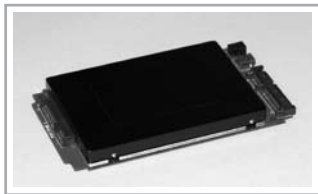


B

- Align the SATA connector on the rear of the SSD with the SATA connector on the rear of the PCB (Pic A), and then slide the SSD connector onto the PCB connector (Pic B).

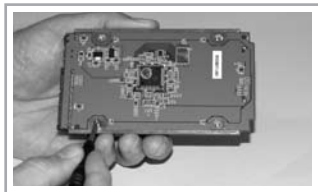


A



B

- Hold the PCB and SSD together and flip them upside down. On the bottom of the PCB, use the smaller screws to attach the SSD to the PCB, and then flip the assembled PCB/SSD unit upright.
- Align the assembled PCB/SSD unit with the rounded grooves on both sides of the external enclosure, and then push the unit inside the external enclosure.
- Re-attach the back cover and secure it with the screws that you removed in step 1.



To use the 2.5-inch external enclosure as a standalone device

If you are installing the SSD internally into a desktop computer, skip this section and proceed to either “To use the 2.5-inch SSD external enclosure in the 3.5-inch desktop drive bay” or “To use the 2.5-inch SSD external enclosure in the 5.25-inch desktop drive bay.”

If you are using the SSD as a standalone external device for a desktop or notebook computer, use the following instructions.

1. Start the system.
2. Using the USB cable provided in this kit, connect the USB port of the 2.5-inch external enclosure to a computer USB port.

NOTE: The cable is two-headed; you may need to use both heads in order to draw enough power to run the SSD, particularly if you are using a notebook computer.

3. After the system recognizes the device, the SSD is ready to use.

To use the 2.5-inch external enclosure in the 3.5-inch desktop drive bay

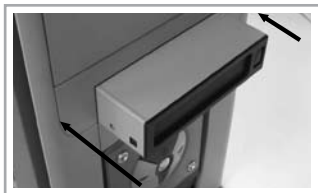
Use the 3.5-inch drive bay provided in this kit to install the 2.5-inch external enclosure into the 3.5-inch bay (floppy drive bay) of a desktop computer.

1. Turn the computer power off, and then open the computer case.

2. On the rear of the 3.5-inch drive bay, plug in the power cable adapter and the SATA cable.



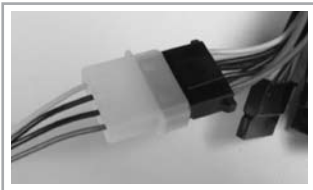
3. Insert the 3.5-inch drive bay into the 3.5-inch bay of a desktop computer.



4. Adjust the drive bay so that it is level in the case. Use the larger screws to secure it on both sides.



5. Connect the drive bay power cable to the power cable inside the case (Pic A). Connect the drive bay SATA cable to the SATA slot on the motherboard (Pic B).

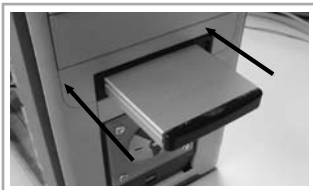


A

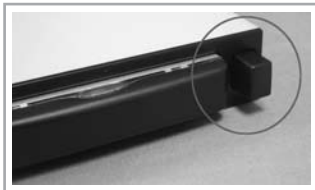


B

6. Insert the 2.5-inch external enclosure (Pic A) into the 3.5-inch drive bay until they are firmly connected. The eject button on the 3.5-inch drive bay will pop out when the 2.5-inch external enclosure is fully inserted (Pic B).



A



B

7. Turn on the computer power; when the system starts up, the operating system should recognize a new disk drive. If the system does not recognize the drive, contact technical support at www.crucial.com/support.

NOTE: The SATA drive is hot-swappable if the motherboard supports this feature; otherwise, the connection must be made when the power is off. Check with your motherboard or system manufacturer for more information.

To use the 2.5-inch external enclosure in the 5.25-inch desktop drive bay

Use the 3.5-inch drive bay and 5.25-inch bracket provided in this kit to install the 2.5-inch external enclosure into the 5.25-inch bay (CD-ROM/DVD drive bay) of a desktop computer.

1. Turn the computer power off, and then open the computer case.
2. Place the 3.5-inch drive bay into the 5.25-inch bracket (Pic A), aligning the screw holes in the drive bay with the openings in the bracket (Pic B).



A



B

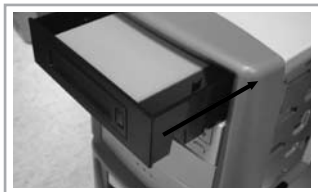
3. Use the larger screws to anchor the housing inside the brackets.



4. On the rear of the 3.5-inch drive bay, plug in the power cable adapter and the SATA cable.



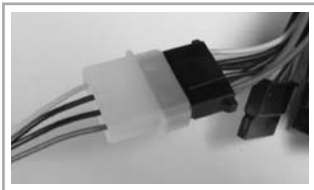
5. Insert the assembled 3.5-inch drive bay/5.25-inch bracket unit into the 5.25-inch bay of the desktop tower.



6. Adjust the assembled 3.5-inch drive bay/5.25-inch bracket unit so that it is level in the case. Use the larger screws to secure the unit on both sides.



7. Connect the drive bay power cable adapter to the power cable inside the case (Pic A). Connect the drive bay SATA cable to the SATA slot on the motherboard (Pic B).



A

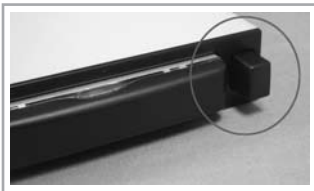


B

8. Insert the 2.5-inch external enclosure (Pic A) into the 3.5-inch drive bay within the 5.25-inch bracket until they are firmly connected. The eject button on the 3.5-inch drive bay will pop out when the 2.5-inch external enclosure is fully inserted (Pic B).



A



B

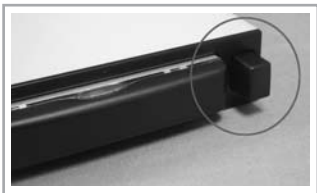
9. Turn on the computer power; when the system starts up, the operating system should recognize a new disk drive. If the system does not recognize the drive, contact technical support at www.crucial.com/support.

NOTE: The SATA drive is hot-swappable if the motherboard supports this feature; otherwise, the connection must be made when the power is off. Check with your motherboard or system manufacturer for more information.

Removal steps

To remove a 2.5-inch external enclosure from a 3.5-inch or 5.25-inch drive bay


1. If your system does not support hot-swapping, turn off the computer power before removing the drive. (Check with your motherboard or system manufacturer for more information.)
2. Press the eject button on the 3.5-inch drive bay to pop out the 2.5-inch external enclosure.



3. Pull the 2.5-inch external enclosure out of the 3.5-inch drive bay.



To remove the standalone 2.5-inch external enclosure from the USB port in Windows 2000 or above

1. In the bottom-right section of the Taskbar, right-click the remove hardware icon (), and then select Safely remove USB Mass storage Device.

Safely remove USB Mass Storage Device

2. When the Safe to Remove Hardware message appears, and the remove hardware icon disappears from the task bar, detach the USB cables that connect the SSD external enclosure to the computer.

Safe To Remove Hardware

The “USB Mass Storage Device” device can now be safely removed from the system.

To remove the standalone 2.5-inch external enclosure from the USB port in a Mac

1. Before detaching the 2.5-inch external enclosure from the computer, you must drag the drive icon to the trash can.



Partitioning and formatting steps

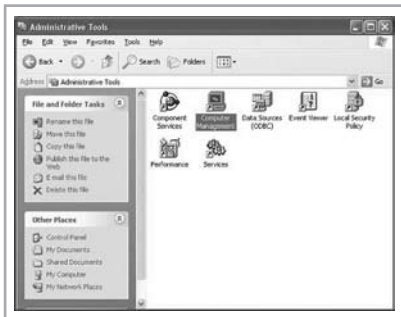
CAUTION! New storage drives (such as an SSD) need to be formatted before use. You might also need to reformat or partition your drive at some point in the future. **Please be aware that partitioning and formatting your SSD will destroy all existing data on the drive.** Make sure that you have a backup copy of your data before you partition or format your SSD. Consult your operating system user guide for details on partitioning and formatting drives – depending on how you use your drive (internal vs. external, primary vs. secondary), all the steps below may not apply to your particular configuration.

To partition and format the storage drive in Windows 2000 or above

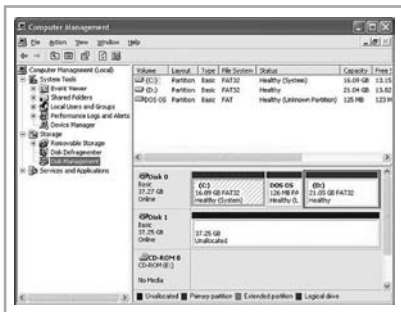
1. Open **Control Panel**,
and then select **Administrative Tools**.



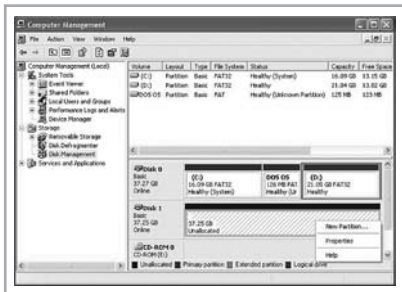
2. Double-click **Computer Management**.



3. Click **Disk Management**. A list of drives appears.



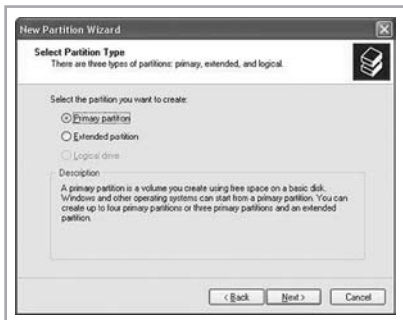
4. Right-click inside the section with unallocated disk space, and then select **New Partition**.



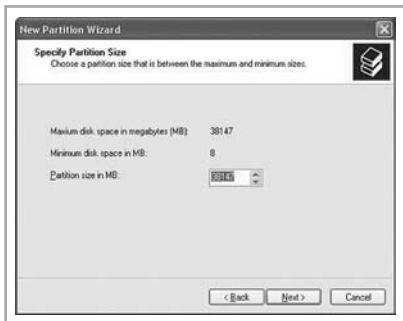
5. The New Partition Wizard appears. Click **Next**.



6. Select **Primary partition**, and then click **Next**.



7. Leave the **Partition size** in **MB** at the default setting, and then click **Next**.



8. Select **Assign the following drive letter**, and then click **Next**.

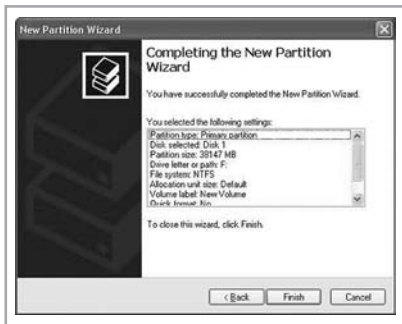


9. Select **Format this partition with the following settings**. In the **File system** field, select **FAT32** or **NTFS**, and then click **Next**.

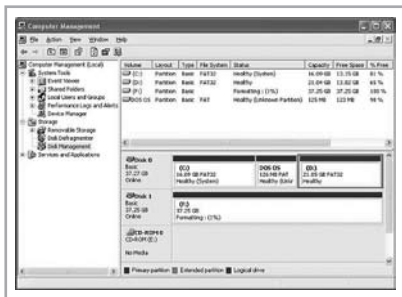
NOTE: Although the Windows 2000/XP Fast FAT driver can support volumes larger than 32GB using the FAT32 file system (subject to other system limits), by design you cannot create a volume in excess of 32GB using the **Format Partition** interface. Instead, Microsoft recommends using the NTFS file system with SSDs larger than 32GB.



10. When the formatting completes, click **Finish** to close the New Partition Wizard.



11. The SSD should appear in the Computer Management screen as another storage drive.



To partition and format the SSD in Mac OS

Partitioning and formatting the SSD in Mac OS 9.2 and earlier:

Mac OS 9.2 and earlier does not support making partitions on an external drive; you will need to purchase additional third-party software and then connect the SSD to the computer internally.

Partitioning and formatting the SSD in Mac OS X:

1. Turn on the computer power.
2. Connect the SSD according to the internal or standalone instructions in this guide.
3. Open the **Go** menu, and then select **Utilities**.



4. Double-click **Disk Utility**.



5. In the list of drives on the left side, select the Crucial SSD. (Be sure to select the SSD, not an individual partition.)



6. On the right side, near the top of the page, click the **Partition** tab. Under **Volume Information**, enter a **Name**, and then select the correct **Format**. Select **Install Mac OS 9 Disk Drivers**. Click the **Partition** button in the lower-right corner.



✓ **Mac OS Extended (Journaled)**

Mac OS Extended

Mac OS Extended (Case-sensitive, Journaled)

Mac OS Extended (Case-sensitive)

MS-DOS File System

UNIX File System

7. Click the **Erase** tab near the top of the page, and then click the **Erase** button in the lower-right corner.



8. When the formatting completes, the SSD should appear on the desktop as another storage drive.



FAQs


Q: Do I need to connect the SSD to the computer with both USB plugs? What is the difference between using one plug versus using two plugs?

A: Variations in the computer's hardware working environment may cause the USB power supply to be inadequate at times. In this case, you need to connect the SSD to the computer with both USB plugs or use an extra power adapter.

Q: Is the SSD hot-swappable?

A: Yes.

SATA: The SSD is hot-swappable via the SATA connection if the motherboard supports this feature; otherwise, the connection must be made when the power is off. Check with your motherboard manufacturer for more information.

USB: USB connections are always hot-swappable; just be sure to stop the drive first by right-clicking the remove hardware icon () in the bottom-right section of the Taskbar.

©2008 Micron Technology, Inc. All rights reserved. Information subject to change without notice. Micron, Crucial, and the Crucial logo are trademarks of Micron Technology, Inc. in the U.S. and outside of the U.S. All other trademarks referenced herein are the property of their respective owners.